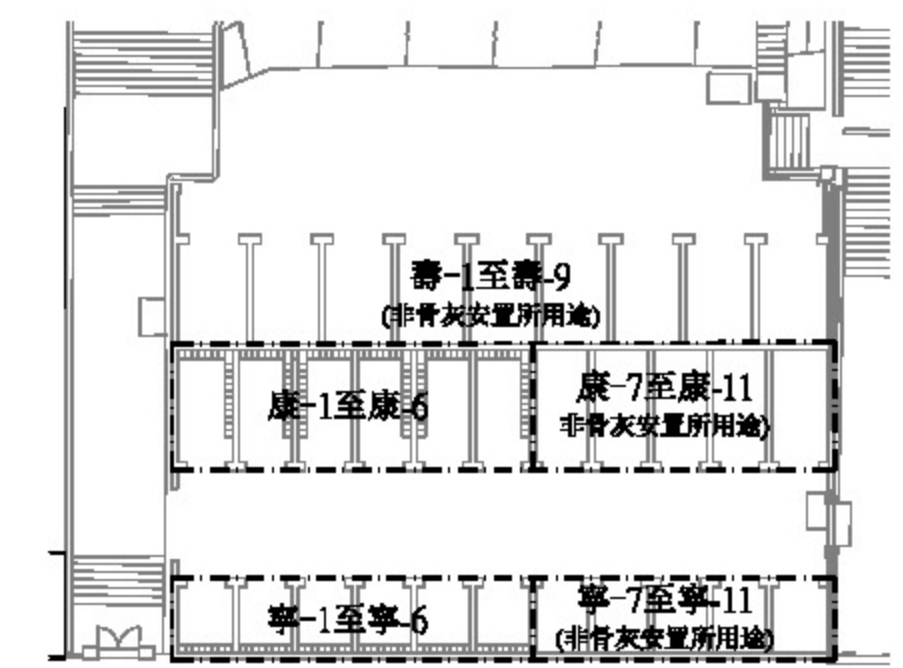
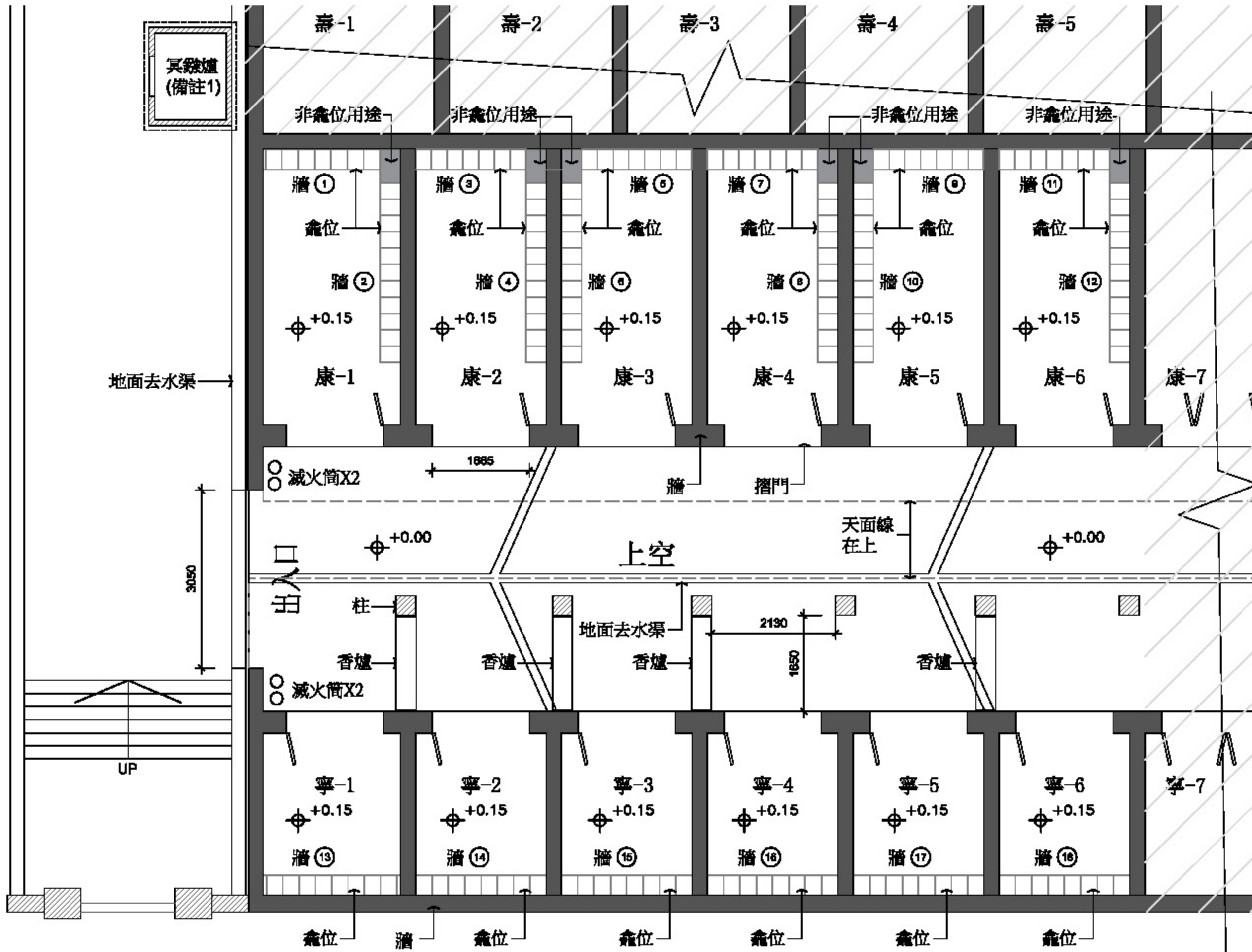
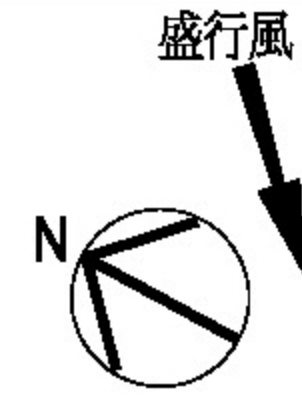


建議樓面平面圖
就截算前骨灰安置所的牌照申請



靈灰安置所C (1:500)

	龕位資料		
	牆 (直排x橫排)	龕位編號*	數量
康-1	① 10 x 7	1 - 130	70
	② 10 x 11	131 - 368	110
康-2	③ 10 x 7	1 - 130	70
	④ 10 x 11	131 - 368	110
康-3	⑤ 10 x 7	219 - 368	70
	⑥ 10 x 11	1 - 218	110
康-4	⑦ 10 x 7	1 - 130	70
	⑧ 10 x 11	131 - 368	110
康-5	⑨ 10 x 7	219 - 368	70
	⑩ 10 x 11	1 - 218	110
康-6	⑪ 10 x 7	1 - 130	70
	⑫ 10 x 11	131 - 368	110
寧-1	⑬ 10 x 8	1 - 163	80
寧-2	⑭ 10 x 8	1 - 163	80
寧-3	⑮ 10 x 8	1 - 163	80
寧-4	⑯ 10 x 8	1 - 163	80
寧-5	⑰ 10 x 8	1 - 163	80
寧-6	⑱ 10 x 8	1 - 163	80
合共			1560

*上列龕位編號不包括4, 5, 7之編號